

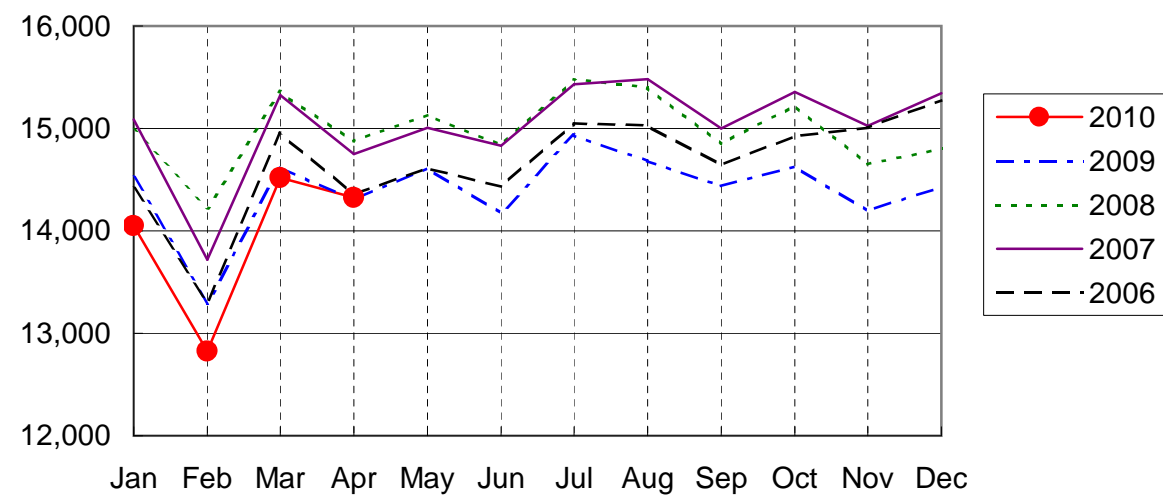
NARITA AIRPORT TRAFFIC STATISTICS -2010(JAN-DEC)

NARITA INTERNATIONAL AIRPORT CORPORATION

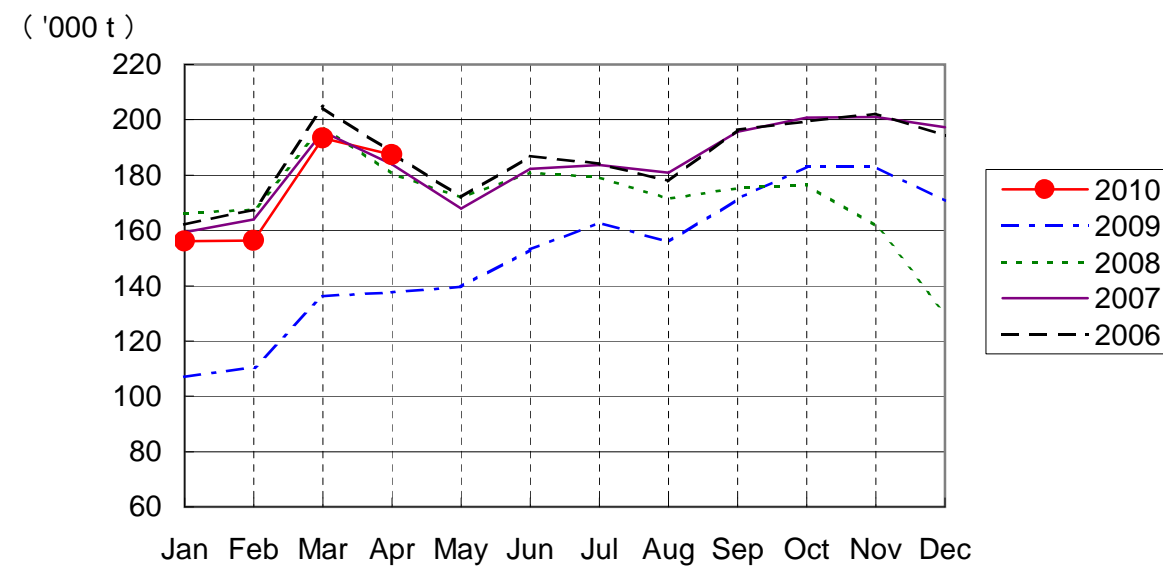
MONTH DESCRIPTION	AGGREGATE 21-May-78~ 31-Dec-09	2010												AGGREGATE 21-May-78 31-Dec-10		
		ACTUAL		PROV.		MAY	JUN	JUL	AUG	SEP	OCT	NOV	DEC		TOTAL	AVERAGE PER DAY
		JAN	FEB	MAR	APR											
AIRCRAFT MOVEMENTS	3,870,194	15,499	14,153	15,956	15,775									61,383	512	3,931,577
		(99)	(99)	(101)	(102)									(100)		
International	3,655,811	14,051	12,826	14,516	14,327									55,720	464	3,711,531
		(97)	(96)	(99)	(100)									(98)		
PAX Flight	3,022,502	12,327	11,117	12,413	12,173									48,030	400	3,070,532
		(97)	(98)	(100)	(99)									(98)		
Cargo Flight	570,002	1,561	1,508	1,906	1,939									6,914	58	576,916
		(95)	(83)	(100)	(104)									(95)		
Others	63,307	163	201	197	215									776	6	64,083
		(109)	(143)	(80)	(140)									(112)		
Domestic	214,383	1,448	1,327	1,440	1,448									5,663	47	220,046
		(121)	(131)	(120)	(125)									(124)		
PAX Flight	199,116	1,420	1,285	1,419	1,432									5,556	46	204,672
		(122)	(129)	(121)	(126)									(124)		
Others	15,267	28	42	21	16									107	1	15,374
		(108)	(210)	(75)	(94)									(118)		
TERMINAL PASSENGERS	734,935,745	2,738,930	2,605,018	3,059,355	2,684,465									11,087,768	92,398	746,023,513
		(105)	(108)	(112)	(105)									(107)		
International	709,285,137	2,618,871	2,490,827	2,925,748	2,564,933									10,600,379	88,336	719,885,516
		(104)	(107)	(111)	(104)									(107)		
Japanese	409,584,476	1,342,737	1,329,667	1,674,844	1,218,687									5,565,935	46,383	415,150,411
		(104)	(97)	(110)	(98)									(103)		
Non-Japanese	158,536,359	668,568	684,082	751,922	858,618									2,963,190	24,693	161,499,549
		(100)	(130)	(113)	(114)									(114)		
Transit	141,164,302	607,566	477,078	498,982	487,628									2,071,254	17,260	143,235,556
		(107)	(111)	(110)	(103)									(108)		
Domestic	25,650,608	120,059	114,191	133,607	119,532									487,389	4,062	26,137,997
		(129)	(131)	(134)	(125)									(130)		
CARGO (t)	44,149,199	156,057	156,392	193,284	187,364									693,097	5,776	44,842,296
		(146)	(142)	(142)	(136)									(141)		
Loaded	20,617,338	73,940	73,896	88,296	87,458									323,590	2,697	20,940,928
		(167)	(163)	(156)	(142)									(156)		
Export	15,028,041	55,570	56,311	66,682	66,110									244,673	2,039	15,272,714
		(182)	(175)	(180)	(153)									(171)		
Transit	5,589,297	18,370	17,585	21,614	21,348									78,917	658	5,668,214
		(135)	(135)	(109)	(115)									(122)		
Unloaded	23,531,861	82,117	82,496	104,988	99,906									369,507	3,079	23,901,368
		(131)	(127)	(132)	(131)									(130)		
Import	18,076,203	63,926	65,692	84,219	79,386									293,223	2,444	18,369,426
		(128)	(125)	(139)	(137)									(132)		
Transit	5,455,658	18,191	16,804	20,769	20,520									76,284	636	5,531,942
		(144)	(132)	(111)	(115)									(123)		
FUEL SUPPLIED TO AIRCRAFT (kl)	133,971,952	398,466	363,028	405,495	392,119									1,559,108	12,993	135,531,060
		(94)	(95)	(99)	(99)									(97)		

NOTE : ()% ; Changes from the same month of previous year.

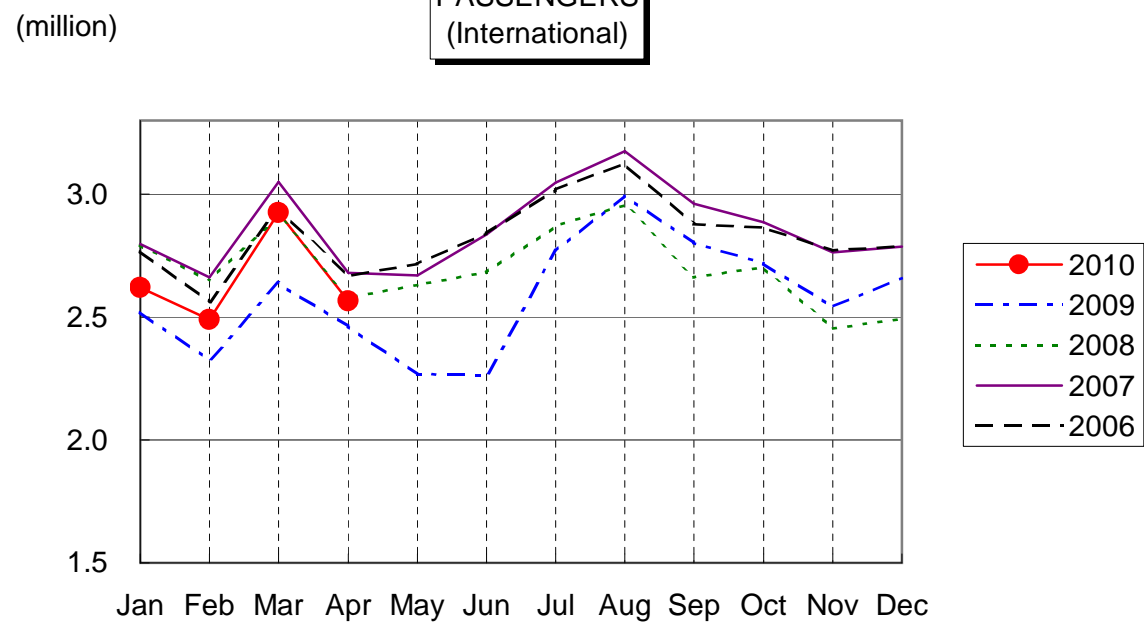
AIRCRAFT MOVEMENTS
(International)



CARGO
(International)



PASSENGERS
(International)



AVIATION FUEL SUPPLIED

