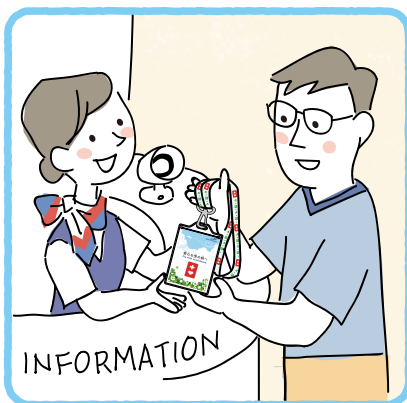


Help Strap Information

This strap has been designed so that customers who need assistance can travel effortlessly and stress-free.



Usage



1 Collect

Collect a help strap at one of the information counters at Narita Airport.

* Help strap cards can be downloaded on Narita Airport's official website.



2 Fill in the Card

Write in English on the back of the card what you want staff to know and that you require assistance. Then insert the card in the strap holder and put the strap on.



3 Use

When you need assistance or information, show the staff the information on the back of the card. After you have finished using the strap and card, you can take them home if you wish.

Back of card. Example comments.

わたしが難しいこと、
手助けしてほしいこと
How you can help me

- 1 I have an intellectual disability.
Please use simple words and speak slowly.
- 2 便名 Flight NJ520
ゲート Gate 20
時間 Time 17:20

1 Write in English on the back of the card what you want staff to know and that you require assistance.

2 Fill in your flight information too.

* If you are unsure, show your airline ticket to staff at the information counter.



We wish you safe travels.